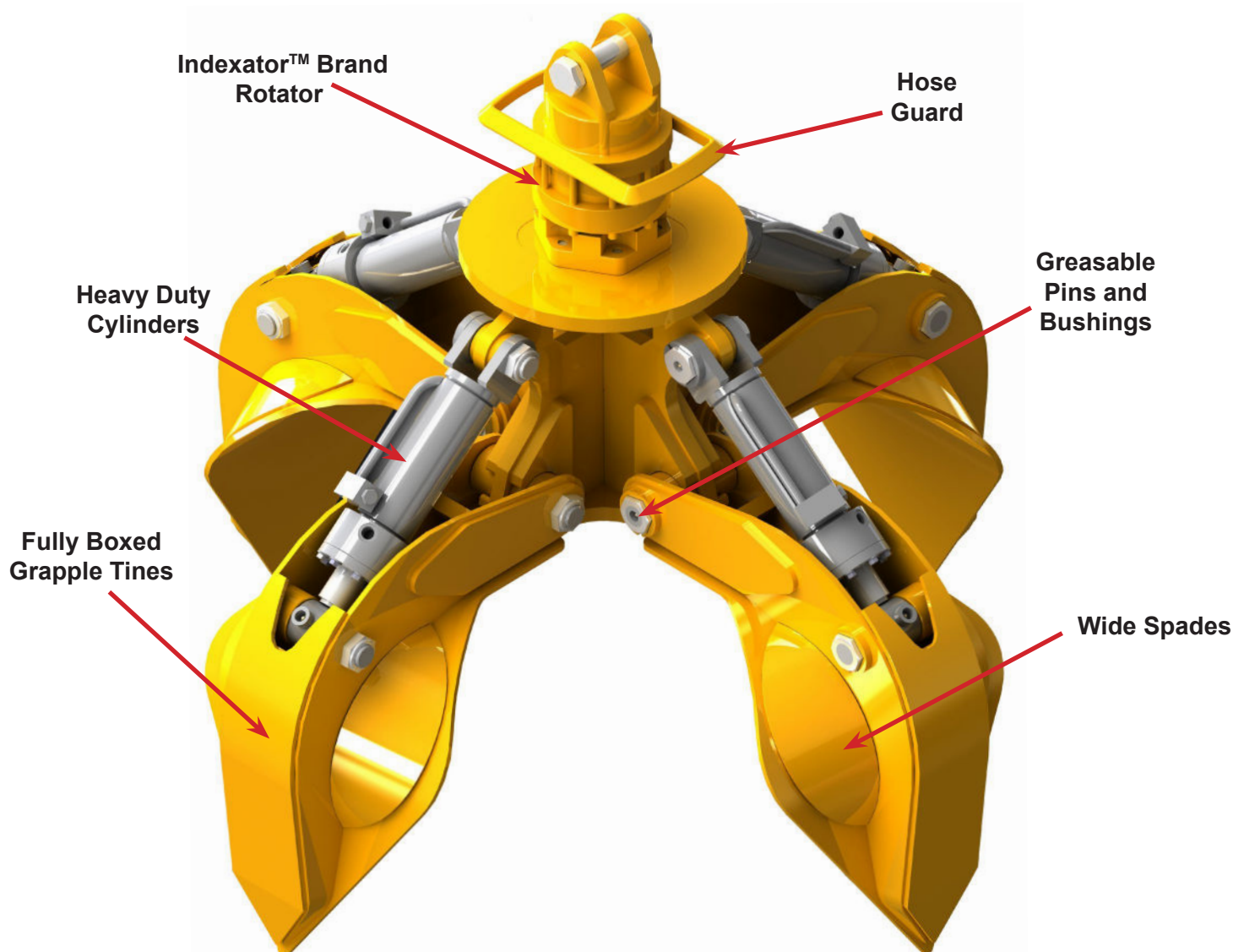


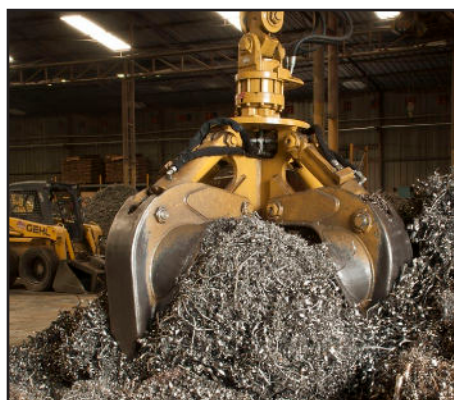
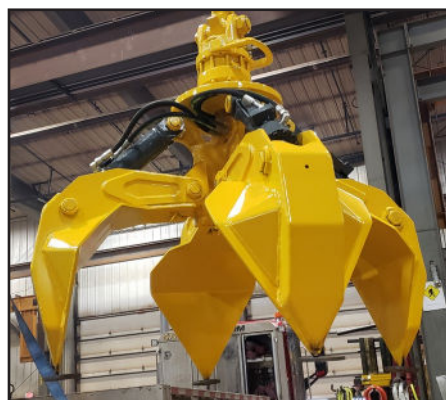
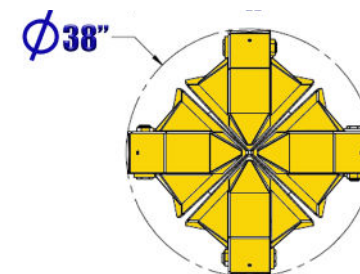
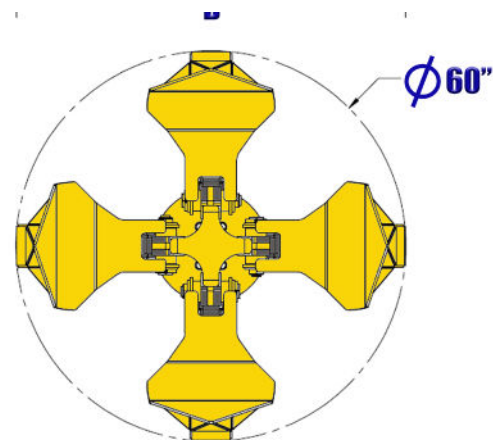
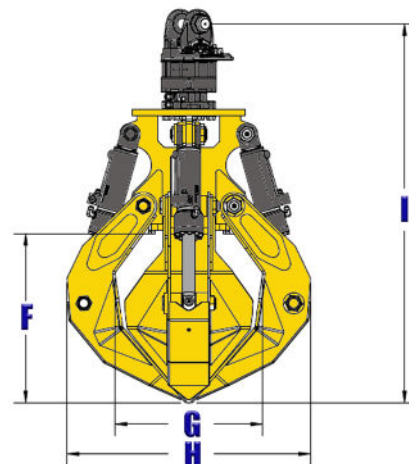
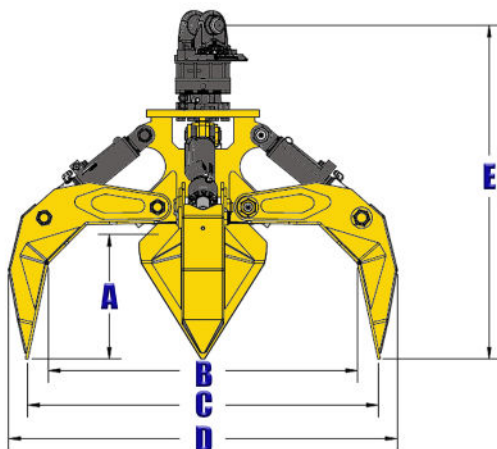
The **Builtrite, 4TSG 25 Series Orange Peel Grapple** is designed for truck mounted material handlers, smaller excavators and material handlers to handle scrap metals, solid waste, woody debris, etc. Key features include:

- Grapple arms constructed of high strength, abrasion resistant steel for maximum wear resistance.
- High strength cylinders with hardened cylinder and pivot pins with aluminum bronze bushings.
- 22,000 pound capacity, well established, highest quality rotator.
- Easily accessible, yet well protected grease zerks.
- Wide spade width handles a variety of materials.



Builtrite, 4TSG 25, Four-Tine, Orange Peel Grapple Specifications

Model	Volume @ Full Close		Volume @ 60% Close (approx.)		Weight		Tine Height @ Open (A)		(B)	Opening (C)		Width (D)	Height @ Full Open (E)		Tine Height @ Close (F)		Gap Width @ Closed (G)		Width @ Closed (H)		Gap Width @ Closed (I)			
	Yd. ³	M ³	Yd ³	M ³	Lbs.	Kg.	in.	mm		in.	mm		in.	mm	in.	mm	in.	mm	in.	mm	in.	mm		
4TSG-25	.25	.2	.4	.35	1,300	591	19	482	48	1,219	54	1,372	60	1,524	52	1,321	26	660	23	584	38	965	59	1,499



Hydraulic Requirements			
MODEL	FUNCTION	FLOW GPM / LPM	PRESSURE PSI / Bar
4TKG 25	Open / Close	18-25 / 69-95	Up To 3,000 / 207
	Rotation	4-6 / 13-21	Up To 1,800 / 124

BUILTRITE LEMCO RESERVES THE RIGHT TO CHANGE SPECIFICATIONS AND PRICES WITHOUT NOTICE IN ORDER TO FOLLOW ITS POLICY OF CONSTANTLY STRIVING TO MANUFACTURE A BETTER PRODUCT WITHOUT INCURRING ANY LIABILITY TO PROVIDE THESE NEW FEATURES ON ANY UNITS PREVIOUSLY MANUFACTURED.

Builtrite Manufacturing

530 Recycle Center Drive, Two Harbors, Minnesota, U.S.A. 55616

Web: www.builtrite.com E-Mail: info@builtrite.com Phone: 218-834-5555 Fax: 218-834-5556

