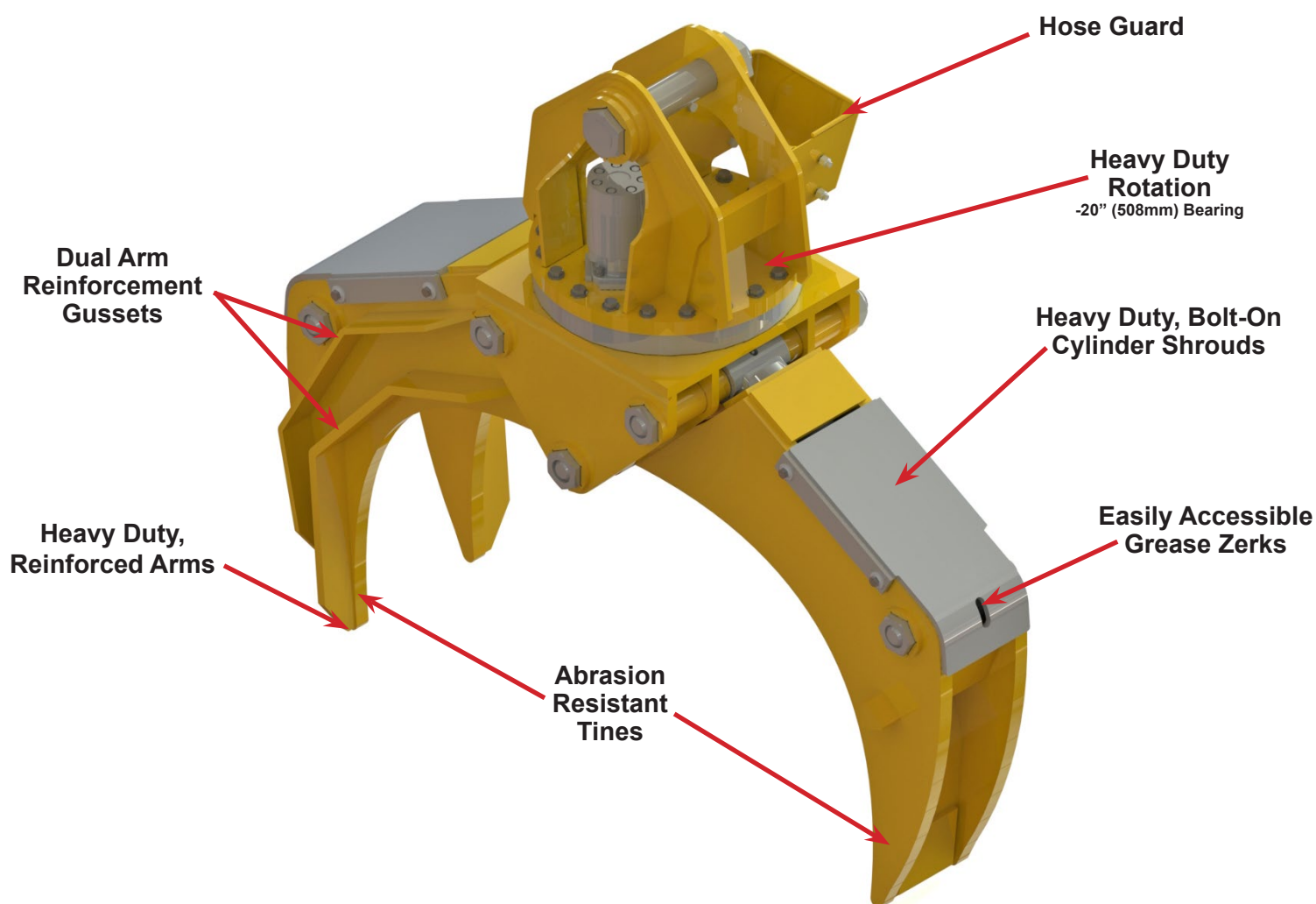


The **Builtrite, Heavy Duty Log Grapple** is designed for single and bulk handling of logs, whether for loading / unloading applications and/ or pull through de-limbing. The finest materials are used to provide maximum durability, exceptional performance and low maintenance, reducing your downtime. Key features include:

- 360° continuous rotation on a heavy duty, 20" (508mm) bearing with advanced, high torque motor (No case drain required) and a high pressure hydraulic swivel.
- Outer arms with dual gussets that run their entire length for added strength.
- Heavy duty, bolt-on cylinder guards.
- High tensile steel used throughout.
- Oversized, hardened cylinder and arm pivot pins with replaceable bushings.
- High pressure cylinders.
- Easily accessible, yet well protected grease zerks.
- Mechanical stops on grapple opening to prevent cylinders from bottoming out.

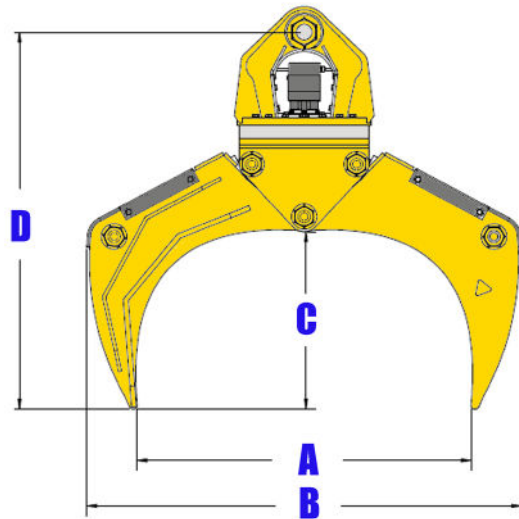
Options Include:

- Custom built connecting links to adapt to all appropriately sized material handlers and excavators.

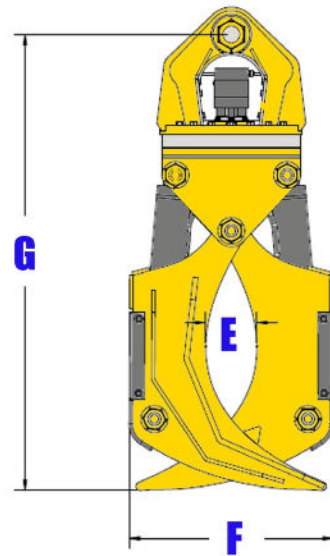


Builtrite, Heavy Duty, Log Grapple Specifications

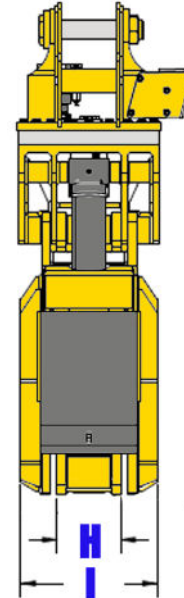
Model	*Weight		Opening		Width @ Open		Jaw Height @ Full Open		Height @ Full Open		Max Opening @ Close		Side Width @ Close		Height @ Full Close		Middle Tine Width		Outside Tine Width	
	Lbs.	Kg.	in.	mm	in.	mm	in.	mm	in.	mm	in.	mm	in.	mm	in.	mm	in.	mm	in.	mm
HDLG 52	2,000	909	52	1,321	68	1,727	28	711	60	1,524	7.5	190	30	762	67.5	1,714	9.25	235	19.75	502



Side View (Opened)



Side View (Closed)



End View

Hydraulic Requirements		
	Flow GPM / LPM	Pressure PSI / Bar
Open / Close	45 / 170	3-5,000 / 207-345
Rotation	8 / 30	1,800 / 124



BUILTRITE LEMCO RESERVES THE RIGHT TO CHANGE SPECIFICATIONS AND PRICES WITHOUT NOTICE IN ORDER TO FOLLOW ITS POLICY OF CONSTANTLY STRIVING TO MANUFACTURE A BETTER PRODUCT WITHOUT INCURRING ANY LIABILITY TO PROVIDE THESE NEW FEATURES ON ANY UNITS PREVIOUSLY MANUFACTURED.

Builtrite Manufacturing

530 Recycle Center Drive, Two Harbors, Minnesota, U.S.A. 55616

Web: www.builtrite.com E-Mail: info@builtrite.com Phone: 218-834-5555 Fax: 218-834-5556

