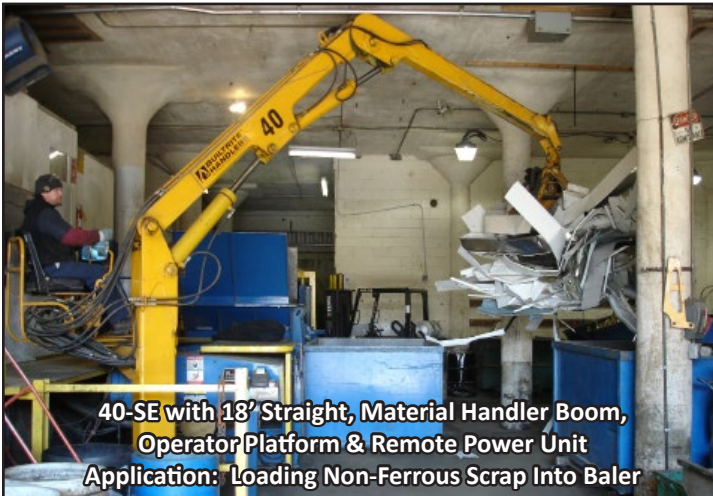


The **Builtrite™, Model 40-SE Stationary Electric Material Handler** is designed for several applications and industries, including wood mills to manipulate logs on conveyors or in ponds or in scrap facilities to load smaller balers and shredders. It is offered with either a platform with an operator's seat or it can be operated remotely.



40-SE with 18' Straight, Material Handler Boom, Operator Platform & Remote Power Unit
Application: Loading Non-Ferrous Scrap Into Baler



40-SE with 18' Straight, Material Handler Boom, Remote Operator's Controls & Remote Power Unit
Application: Straightening Logs On Infeed Conveyor



40-SE with 18' Straight, Material Handler Boom, Operator Platform & Remote Power Unit
Application: Feeding & Manipulating Saw Logs Entering Mill

Model 40-SE Specifications

COMPONENTS

Please see diagram on right.

WARRANTY

4000 Hours or 2 Years, whichever occurs first

BOOM DATA

- 1] 19' (5.8M), straight boom for above grade material handling applications.
- 2] Reinforced structural tubing, high yield steel construction.
- 3] 2" (51mm) boom pivot, 2" (51mm) jib & main boom lift cylinder pin.
- 4] Aluminum bronze bushings at all boom pivot points

HYDRAULICS & LUBRICATION

- 1] 80 Gallon (303L) hydraulic reservoir with suction and return filters, stack type control valves with main relief and safety port relief for boom function.
- 2] Stack type control valves with main relief and safety port relief for boom function.
- 3] Single piston pump.
- 4] 1,750 PSI (120 Bar) operating system.
- 5] Hydraulic oil cooler. 1/2 HP motor drives fan.
- 6] Shutoff valves, heavy walled tubing & multi-wire hose throughout system.
- 7] Centralized grease system. Auto Lube is optional (see photo below).

BOOM CYLINDERS

- 1] One (1) 5" x 24" x 2.5" rod-Main boom cylinder
- 2] One (1) 5" x 24" x 2.5" rod-Jib boom cylinder
- 3] Double acting, heavy wall, honed steel tubing.
- 4] Wear rings on both pistons and glands.
- 5] Rods with heavy chrome plating.
- 6] Accumulator on main lift cylinder to cushion shock loading.

PEDESTAL BASE

- 1] 21.25" (540mm) high pedestal base with inspection port hole.

SWING SYSTEM

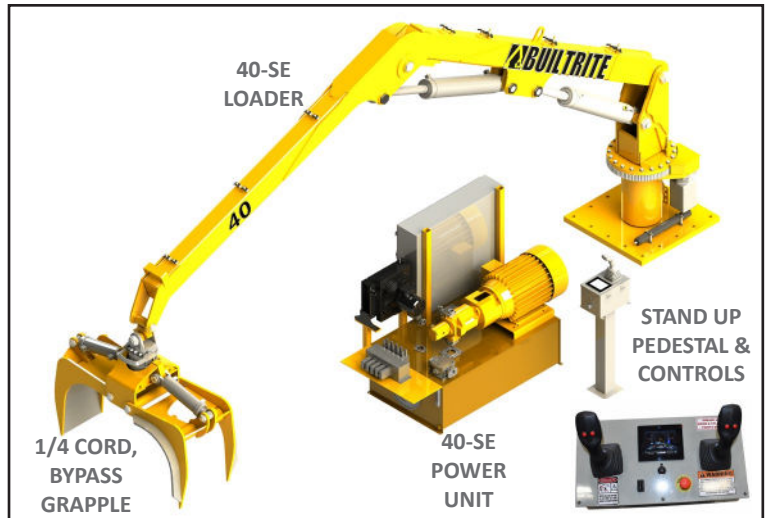
- 1] Dual swing motors.
- 2] Standard, non-continuous rotation with a 20" (576mm) diameter turntable bearing. Continuous rotation optional.
- 3] Hand operated swing control.

MODULAR POWER SOURCE

- 1] One (1) 30 HP 460 Volt 3 Phase, Totally Enclosed, Fan Cooled (T.E.F.C.) electric motor. The Model 40-SE utilizes approximately 12-16 Killowatts per hour, depending upon the application (Full Amp Load = 22 KWH).

ELECTRICAL PACKAGE

- 1] Starter, phase sequence monitor, control accessories group are all in Nema 4 enclosure.



CONTROLS

- A] **Option #1** - An operator's seat is mounted on the loader. The controls are hydraulically actuated
- B] **Option #2** - A set of stand up, electronic controls are mounted to a stand up, remote pedestal.

LIFT CAPACITY (w/ 18' Material Handling Boom)

1] @ Ground Level, 10' Out	3,600 Lbs. / 1,636 Kg.
2] @ Ground Level, 15' Out	2,400 Lbs. / 1,091 Kg.
3] @ Ground Level, 18' Out	1,800 Lbs. / 818 Kg.

