

**Builtrite™, Stationary Electric Material Handlers** have proven themselves in a number of waste and scrap handling applications, capable of handling a wide variety of materials. With a wide array of options, boom configurations and attachments available, let Builtrite design a material handler to maximize production at your facility. Stationary Electric Material Handlers are much less expensive to operate (**Less than 50%!**), safer, quieter and don't produce emissions like diesel powered, mobile equipment. Maintenance costs are also less and the power unit can be remotely located where it is not subjected to dusty conditions, further reducing maintenance costs.



## Features and Specifications:

### Lift Capacity (Less attachment)

- 11,000 Lbs. (5,000 Kg.) @ 10' (3M) R
- 7,500 Lbs. (2,872 Kg.) @ 15' (4.57 M) R
- 5,500 Lbs. (2,500 Kg.) @ 20' (6M) R
- 4,000 Lbs. (1,818 Kg.) @ 25' (7.6M) R

### Boom Data

- Horizontal Reach = 22-27' (6.7-8.2M), depending upon application requirement.
- Fabricated design, high yield steel construction.
- 2.5" (63mm) boom pivot, 2" (51mm) jib & main boom lift cylinder pins.
- Aluminum bronze bushings at all boom pivot points.

### Boom Cylinders

- One (1) 7" x 36" x 3" rod-Main boom cylinder
- One (1) 6" x 32" x 3" rod-Jib boom cylinder
- Double acting heavy wall, honed steel tubing, with cushioned stops
- Cylinders have wear rings on pistons and glands
- Heat treated cylinder rods with heavy chrome plating

### Swing System

- Standard, non-continuous rotation with a 28" (711mm) diameter turntable bearing, powered by a single swing motor and planetary gear box. Continuous rotation optional.

### Control Deck

- Central control console with instrumentation and start/stop controls.
- Foot or hand operated swing control.

### Power Source

- One (1) 50 HP 460 Volt 3 Phase, Totally Enclosed, Fan Cooled (T.E.F.C.) electric motor. The Model 1010-SE utilizes approximately 18-25 Killowatts per hour, depending upon the application.

### Electrical Package

- Starter, phase sequence monitor, control accessories group are all in Nema 4 enclosure. Start/stop controls on control console. Electric slip ring when continuous rotation is required. Main breaker base or power unit mounted.

### Pedestal Base

- 33" (838mm) high pedestal base with inspection port hole.

### Hydraulic System

- 100 Gallon (379L) hydraulic reservoir with suction and return filters, stack type control valves with main relief and safety port relief for boom function.
- One triple gear pump.
- Hydraulic oil cooler. 1HP motor drives fan and AC compressor.
- Shutoff valves, heavy walled tubing & multi-wire hose throughout system.



### Operator's Cab

- 38" (965mm) x 51" (1,295mm), fully insulated & pressurized
- Equipped with a sliding door, sliding window, wiper/washer, defroster & dome light
- Deluxe bucket seat and cushioned arm rests
- Radio/CD
- Industrial grade heater and air conditioner.



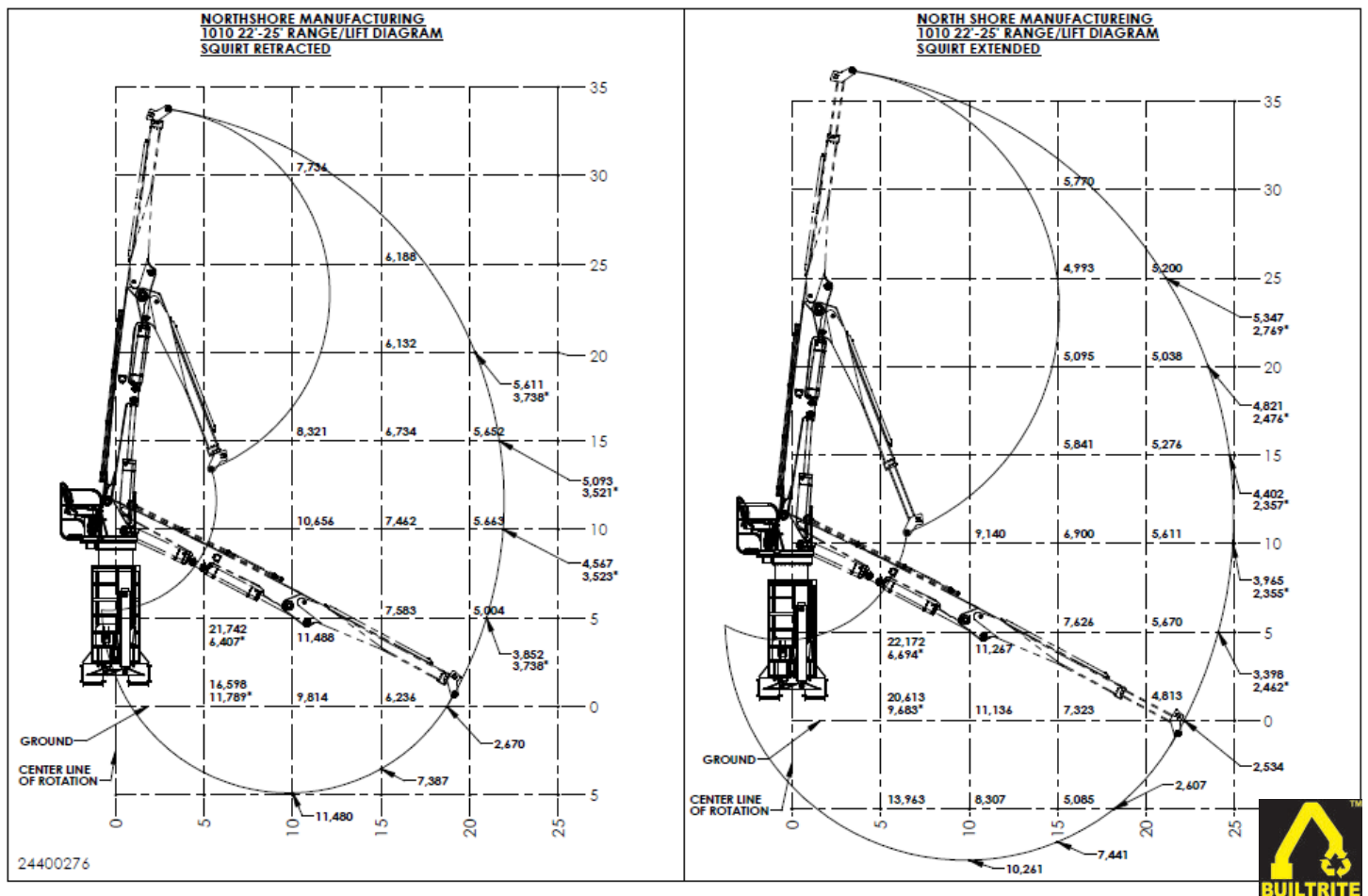
**1010-SE with Operator's Cab and Remote Power Unit. Loading scrap shear inside building; 30' (9.1M) Material Handler Boom**

### Miscellaneous

- Hydraulic Tank Filled.
- Unit greased and tested prior to shipment.
- Manual, centralized grease system.

### Options / Accessories

- Remote operator controls and remote power unit options.
- Special grapples.
- Cab and boom lights.
- Visual warning system.
- Wristing boom.
- 3' Squirt (extendable) boom.
- Rectifier package for magnet.
- Continuous rotation option with auxiliary pass electrical collector.
- Auto Lube System.



BUILTRITE MANUFACTURING RESERVES THE RIGHT TO CHANGE SPECIFICATIONS AND PRICES WITHOUT NOTICE IN ORDER TO FOLLOW ITS POLICY OF CONSTANTLY STRIVING TO MANUFACTURE A BETTER PRODUCT WITHOUT INCURRING ANY LIABILITY TO PROVIDE THESE NEW FEATURES ON ANY UNITS PREVIOUSLY MANUFACTURED.

### Builtrite Manufacturing

530 Recycle Center Drive, Two Harbors, Minnesota, U.S.A. 55616

Web: [www.builtritehandlers.com](http://www.builtritehandlers.com) E-Mail: [info@builtritehandlers.com](mailto:info@builtritehandlers.com) Phone: 218-834-5555 Fax: 218-834-5556

