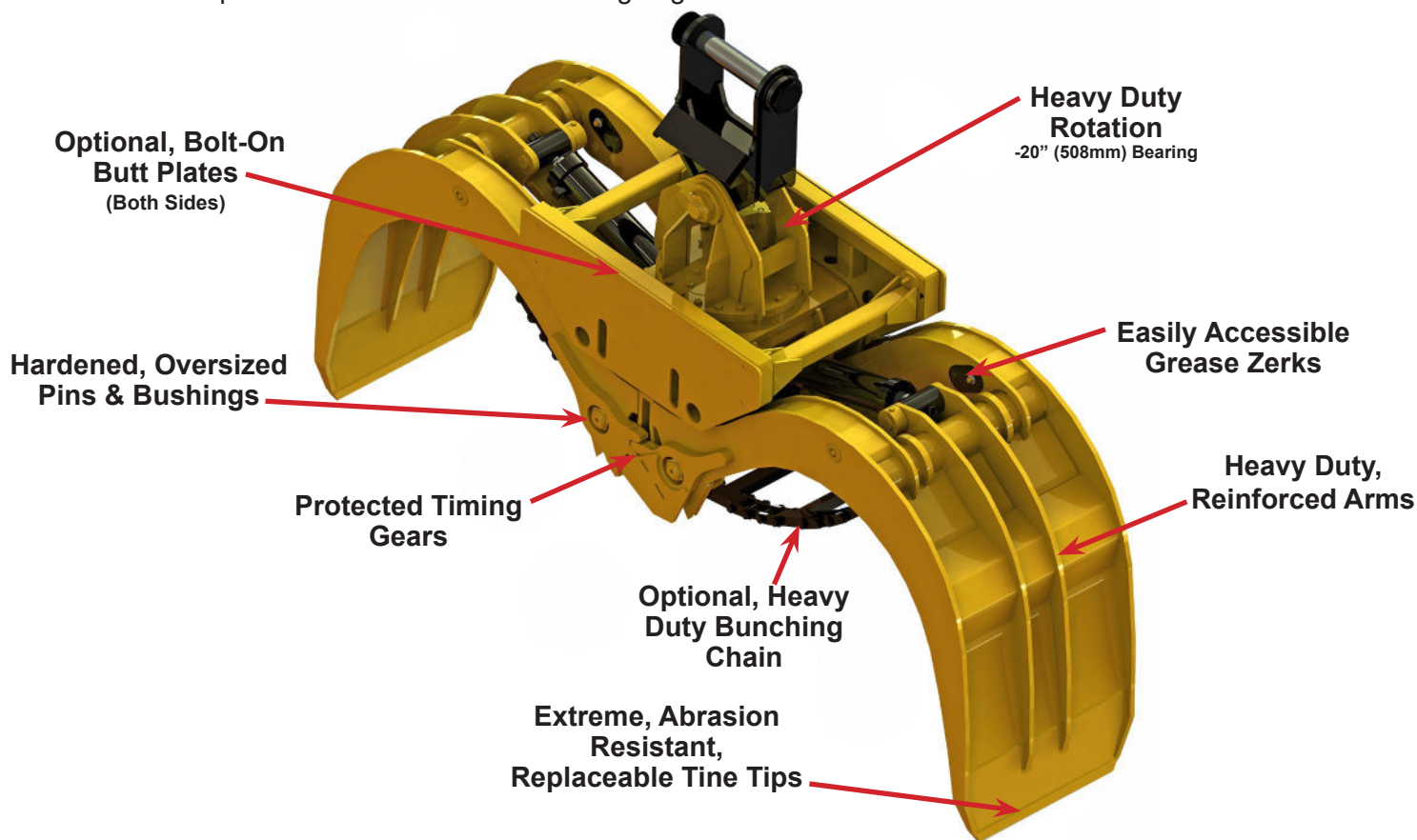


**Builtrite, Butt Style, Pulpwood Grapples** are designed for bulk handling of short wood at wood processing facilities. The finest materials are used to provide maximum durability, exceptional performance and low maintenance, reducing your downtime. Key features include:

- 360° continuous rotation on a heavy duty, 20" (508mm) bearing with advanced, high torque motor and a high pressure hydraulic swivel.
- Optimum arm curvature for gathering and handling the maximum amount of logs. Torque tubes, gusseting and ribbing used throughout the arms to resist bending / twisting.
- High tensile steel used throughout.
- Arm tips made from hardened, abrasion resistant material.
- Oversized, hardened cylinder and arm pivot pins with replaceable bushings.
- High pressure cylinders with holding valves.
- Easily accessible, yet well protected grease zerks.
- Cylinder pin access holes allow easy removal of cylinder pins without having to remove butt plates.
- Synchronized jaws for precise picking and placement. Timing gears are weld-in replaceable.
- Heavy duty mechanical stops for open and close.
- 3 Models to choose from.

#### Options Include:

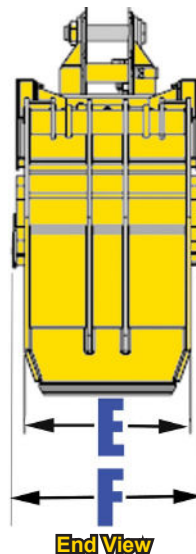
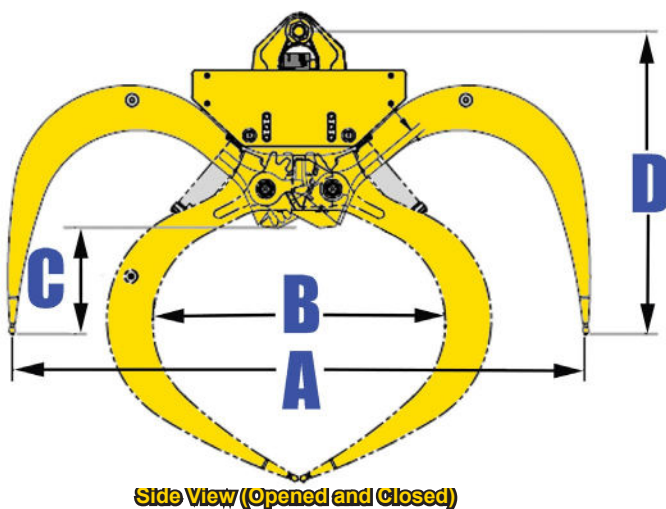
- Heavy duty bunching chain for holding partial loads.
- Bolt-on butt plate on one or both sides for aligning stacks of wood.



Model PG 125 Shown

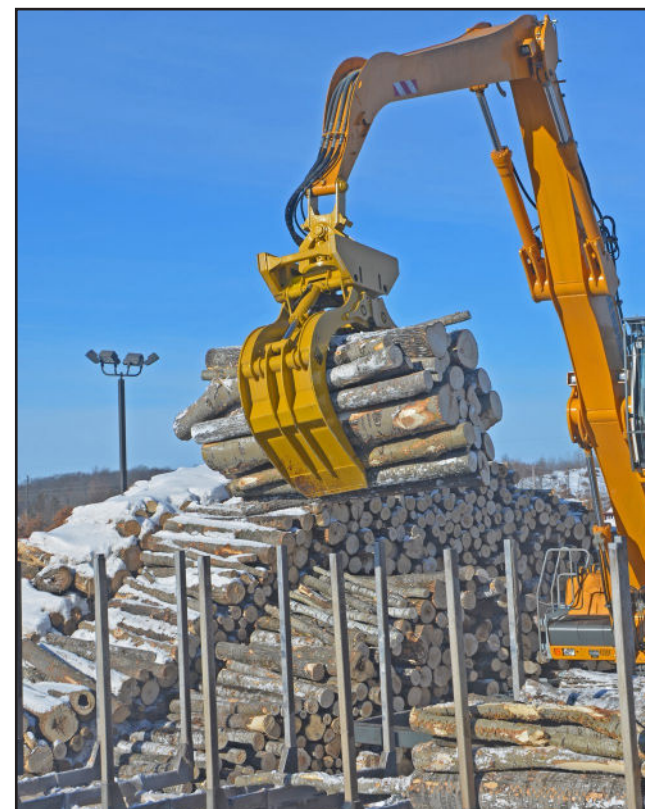
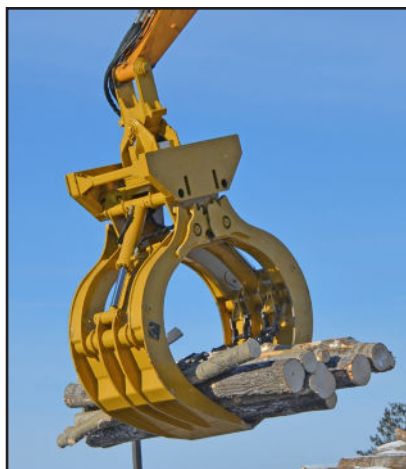
# Builtrite, Heavy Duty, Pulpwood Grapple Specifications

Model	Capacity @ 8' (2.44M) Length		*Weight		Opening (A)		Inner Width @ Close (B)		Distance (C)		Grapple Height @ Open (D)		Tine Width (E)		Total Width (F)	
	Cord	M³	Lbs.	Kg.	in.	mm	in.	mm	in.	mm	in.	mm	in.	mm	in.	mm
PG 50	.50	1.81	2,340	1,064	79	2,007	44	1,118	21	533	54	1,372	30	762	33	838
PG 75	.75	2.72	3,000	1,364	100	2,540	53	1,346	25	635	58	1,473	30	762	33	838
PG 125	1.25	4.53	4,600	2,091	128.5	3,264	65.75	1,670	24	610	68	1,727	31	787	34	864



## Hydraulic Requirements

	Flow GPM / LPM	Pressure PSI / Bar
Open / Close	45 / 170	3-5,000 / 207-345
Rotation	8 / 30	1,800 / 124



BUILTRITE LEMCO RESERVES THE RIGHT TO CHANGE SPECIFICATIONS AND PRICES WITHOUT NOTICE IN ORDER TO FOLLOW ITS POLICY OF CONSTANTLY STRIVING TO MANUFACTURE A BETTER PRODUCT WITHOUT INCURRING ANY LIABILITY TO PROVIDE THESE NEW FEATURES ON ANY UNITS PREVIOUSLY MANUFACTURED.

## Builtrite Manufacturing

530 Recycle Center Drive, Two Harbors, Minnesota, U.S.A. 55616

Web: [www.builtrite.com](http://www.builtrite.com) E-Mail: [info@builtrite.com](mailto:info@builtrite.com) Phone: 218-834-5555 Fax: 218-834-5556

