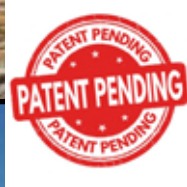




BUILTRITE™
HANDLERS & ATTACHMENTS

2350-SE

**Stationary Electric Material Handlers
Material Handling Boom**



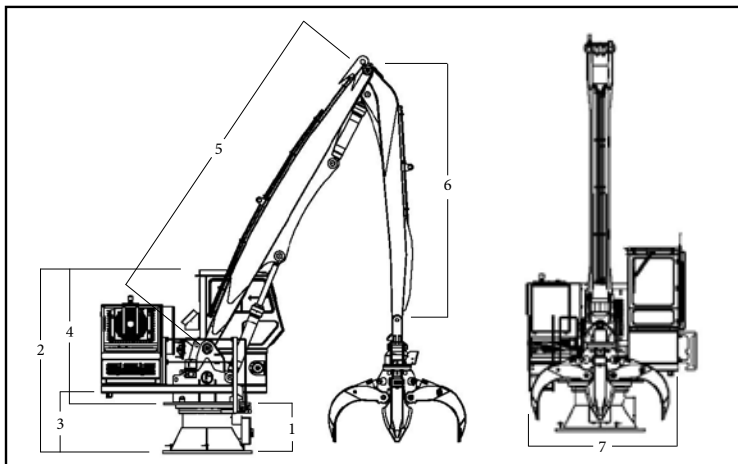
VARIABLE FREQUENCY DRIVE (VFD)

Introducing the Builrite 2350 Stationary Electric Material Handler.

The all new 2350 features a newly designed operator cab that is more spacious, modern and operator friendly as compared to previous models. The 2350 is stronger and more powerful which equals increased lifting capacity. The crown jewel of the 2350 is the patented Variable Frequency Drive (VFD) which saves a substantial amount on operating costs by reducing electrical draw on machine start-up.

Builrite Handlers have proven themselves in a number of waste and scrap handling applications, capable of handling a wide variety of materials. With a wide array of options, boom configurations and attachments available, let Builrite design a material handler to maximize production at your facility. Stationary Electric Material Handlers are much less expensive to operate, safer, quieter and don't produce emissions like diesel powered, mobile equipment. Maintenance costs are also less and the power unit can be remotely located where it is not subjected to dusty conditions, further reducing maintenance costs.

2350 SPECIFICATIONS - (Material Handling Boom Option)



DIMENSIONS

1] 42.0" (107 CM)	5] 20.3' (6.2 M)
2] 11.6' (3.5 M) with standard 2' cab riser	6] 15.9' (4.8 M)
3] 45.75" (111 CM)	7] 10.6' (3.2 M)
4] 7.8' (2.4 M)	

BOOM DATA

- Horizontal Reach = 32'-35' (9.75 - 10.67 M) with material handling style boom (other custom boom lengths available).
- Fabricated design, high yield steel construction.
- 4" (101 mm) boom pivot, 4.0" jib cylinder pin & 4.0" main boom lift cylinder pins (self aligning).
- Aluminum bronze bushings at all boom pivot points.

HYDRAULICS

- 180 Gallon (697L) hydraulic reservoir with suction and return filters, stack type control valves with main relief and safety port relief for boom function.
- Pressure compensating, on demand hydraulic system.
- 4500 PSI (310 Bar) Operating System
- Hydraulic oil cooler. 5HP motor drives fan and 3HP AC compressor.

BOOM CYLINDERS

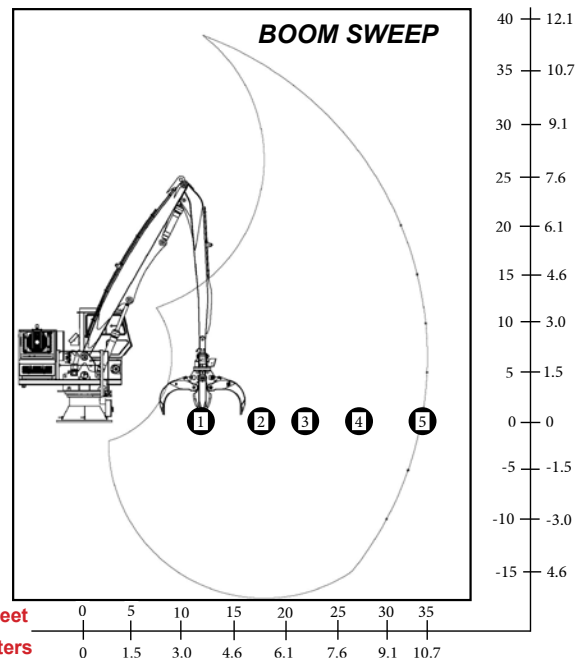
- Main boom - One (1) 6.5" (165mm) bore x 4" (101mm) rod.
- Jib Boom - One (1) 6.5" (165mm) bore, x 4" (101mm) rod.
- Hydraulic stop cushions on both ends.
- Rods with heavy chrome plating.
- Accumulator on main lift cylinder to cushion shock loading.

SWING SYSTEM

- 6.5 RPM with single motor and gearbox swing drive.
- 48" (1219 mm) Diameter internal tooth bearing.

OPERATOR'S CAB

- 39" x 62" fully insulated, cab equipped w/ sliding door.
- AM-FM, USB, bluetooth.
- LED Exterior Lights.
- Electronic Operator Controls – Installed in seat pods with hand swing control.
- Parker IQAN system with MD4 7-inch display.
- Remote diagnostic capability.



LIFT CAPACITY 35' (10.7 m) Boom Option, Less Attachment (Measured at ground level)

RADIUS	LIFT	RADIUS	LIFT
12' (3.66 M)	24045 LBS. (10907 KG)	27' (8.22 M)	11235 LBS. (5096KG)
17' (5.18 M)	19215 LBS. (8716 KG)	35' (88.9 M)	8610 LBS. (3905 KG)
22' (6.70 M)	14175 LBS. (6430 KG)		

CONTROLS

- Two (2) electronic joystick controls with Parker, MD4 control console & G11 module (allows for remote diagnostics).
- Hand swing control.
- Controls can be set to customer preference.

MODULAR POWER SOURCE

- One (1) 150 HP 460 Volt 3 phase, totally enclosed, fan cooled (T.E.F.C.) electric motor.
- One (1) 3 HP 460 volt motor for air conditioning compressor drive plus a 2 HP kidney motor and 5 HP oil cooler motor.
- Self contained or remote mounted power unit.

ELECTRICAL PACKAGE

- Variable Frequency Drive, breaker/disconnect in N.E.M.A. enclosure.
- Start/stop controls on control console.
- Electric slip ring when continuous rotation is required.

PEDESTAL BASE

- 33" (838mm) high pedestal base with inspection hole.
- 68" (1,727mm), OD, round base plate.

MISC.

- Centralized grease zerk location (standard).
- Optional auto-lube grease system.
- Optional continuous rotation option with auxiliary pass electrical collector.



530 Recycle Center Drive • Two Harbors, MN 55616 • builtrite.com • Phone: (218) 834-5555

We are TENAMEC—where tenacious and mechanical fuse. TENAMEC is proud to create the world's most durable material handling solutions under the Builtrite, SAS Forks and Lemco brands.

