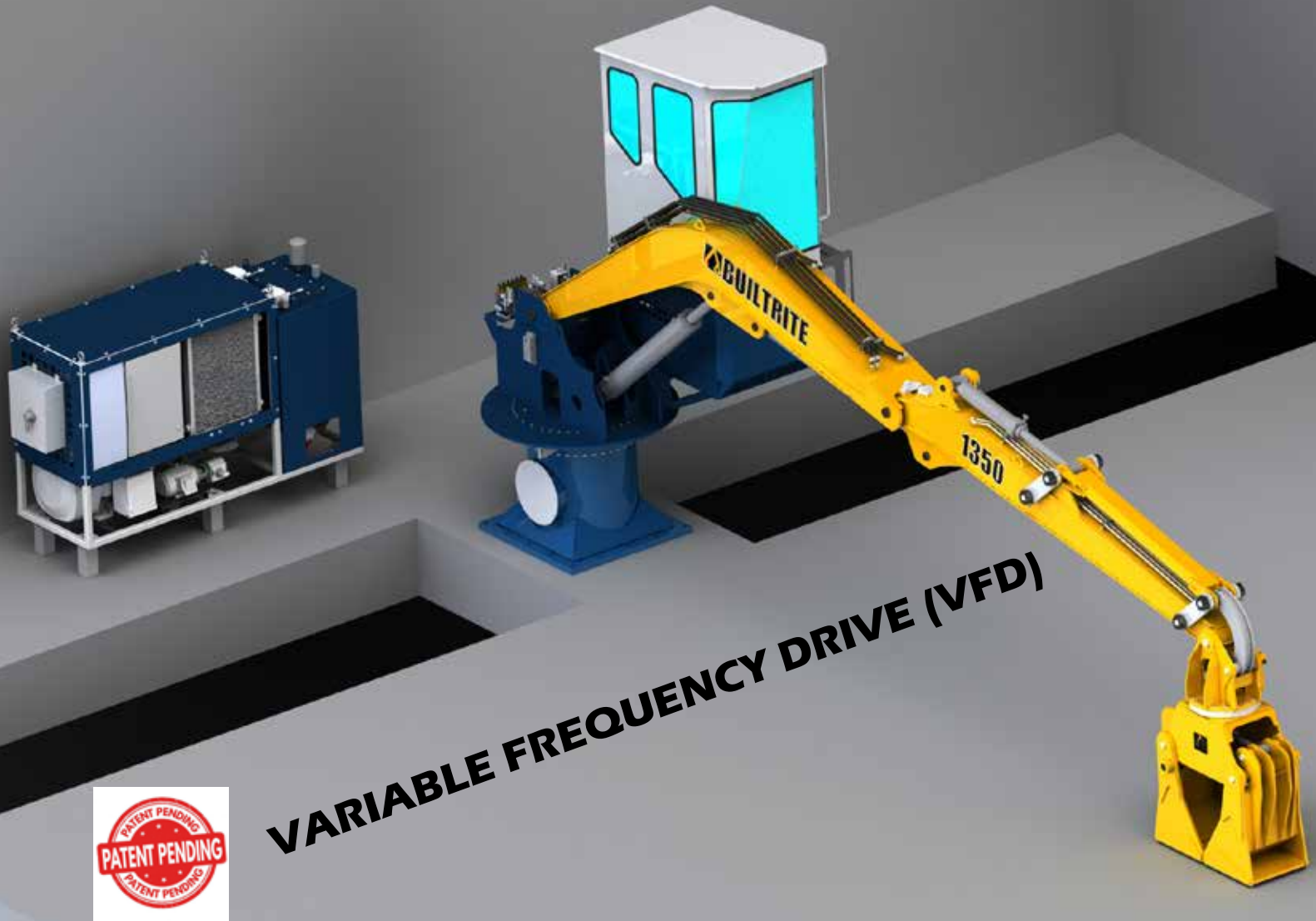




BUILTRITE™
HANDLERS & ATTACHMENTS

1350-SE

Stationary Electric Material Handlers



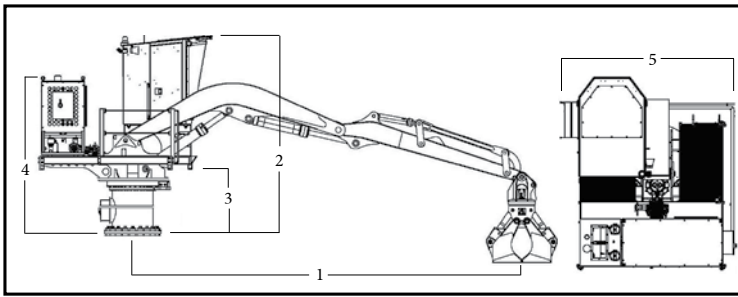
VARIABLE FREQUENCY DRIVE (VFD)

Introducing the Builrite 1350 Stationary Electric Material Handler.

The all-new 1350 features a newly designed operator cab that is more spacious, modern and operator friendly as compared to previous models. The 1350 is stronger and more powerful which equals increased lifting capacity. The crown jewel of the 1350 is the patented Variable Frequency Drive (VFD) which saves a substantial amount on operating costs by reducing electrical draw on machine start-up.

Builrite Handlers have proven themselves in a number of waste and scrap handling applications, capable of handling a wide variety of materials. With a wide array of options, boom configurations and attachments available, let Builrite design a material handler to maximize production at your facility. Stationary Electric Material Handlers are much less expensive to operate, safer, quieter and don't produce emissions like diesel powered, mobile equipment. Maintenance costs are also less and the power unit can be remotely located where it is not subjected to dusty conditions, further reducing maintenance costs.

1350 SPECIFICATIONS



DIMENSIONS - 25' 6" Boom Option

1] 25.5' (7.8 M)	5] 9.4' (2.9 M)
2] 13.0' (4.0 M) with standard 2' cab riser	
3] 4.2' (1.3 M)	
4] 10.0' (3.0 M)	

WARRANTY

4000 hours or 2 years, whichever occurs first.

BOOM DATA

- 1] Horizontal Reach = 25'6"- 30', depending upon approved layout
- 2] Fabricated, hip (bent) styled main boom (for working below grade) and straight jib boom with wristing linkage (for articulating the grapple up and down).
- 3] 3" (76mm) boom pivot and 3.0" (76mm) cylinder pins.
- 4] Aluminum bronze bushings at all boom pivot points.
- 5] Auto-lube Grease System.

HYDRAULICS

- 1] 110 Gallon (416L) hydraulic reservoir.
- 2] Stack type control valves with main relief and safety port relief for boom function.
- 3] One (1) Single Piston Pump w/ separate gear pump for filtration.
- 4] Pressure compensating, on demand hydraulic system.
- 5] 4250 PSI (293 Bar) Operating System
- 6] Hydraulic oil cooler. 3HP motor drives fan and AC compressor.
- 7] Hydraulic test system centrally located on machine.

BOOM CYLINDERS

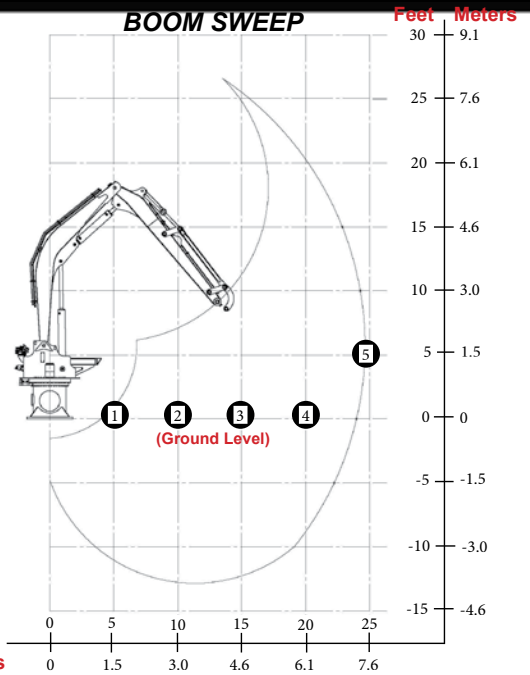
- 1] Main boom - One (1) 5.5" (140mm) bore x 41" (1,042mm) stroke x 3.1" (80mm) rod
- 2] Jib Boom - One (1) 5.5" (140mm) bore, x 30" (762mm) x 3.1" (80mm) rod
- 3] Wear rings on both pistons and glands.
- 4] Rods with heavy chrome plating.
- 5] Accumulator on main lift cylinder to cushion shock loading.

PEDESTAL BASE

- 1] 33" (838mm) high pedestal base with inspection port hole.

SWING SYSTEM

- 1] 6.5 RPM with single motor and gearbox swing drive.
- 2] 39" Diameter internal tooth bearing.



LIFT CAPACITY 25'-6" (9.1 m) Boom Option, Less Attachment (Measured at ground level & 5')

RADIUS	LIFT	RADIUS	LIFT
1] 5' (1.5 M)	10,700 LBS. (4,853 KG)	4] 20' (6.1 M)	9,100 LBS. (4,128 KG)
2] 10' (3.0 M)	17,800 LBS. (8,074 KG)	5] 25' (7.6 M)	8,400 LBS. (3,810 KG)
3] 15' (4.6 M)	11,900 LBS. (5,398 KG)		

MODULAR POWER SOURCE

- 1] One (1) 100 HP 460 Volt TEFC electric motor.
- 2] 3 HP fan & AC Compressor motor for the oil cooler.
- 3] One (1) Single Piston Pump w/ separate gear pump for filtration.

ELECTRICAL PACKAGE

- 1] Variable Frequency Drive, breaker/disconnect in N.E.M.A. enclosure.
- 2] Start/stop controls on control console.
- 3] Electric slip ring when continuous rotation is required.

OPERATOR CAB

- 1] 39" x 62" fully insulated, cab equipped w/ sliding door, wiper/washer, defroster, dome light, and deluxe bucket seat.
- 2] AM-FM, USB, Bluetooth
- 3] Under seat, cab heater & air conditioner
- 4] LED Exterior Lights
- 5] Electronic Operator Controls – Installed in seat pods with hand swing control
- 6] Parker IQAN system with MD4 7-inch display module allows operator adjustments to be made for individual preference
- 7] Remote diagnostic capability
- 8] Cab access via ladder or stairway (if catwalk option purchased)
- 9] Cab can be mounted on left or right side.



530 Recycle Center Drive • Two Harbors, MN 55616 • builtrite.com • Phone: (218) 834-5555

We are TENAMEC—where tenacious and mechanical fuse. TENAMEC is proud to create the world's most durable material handling solutions under the Builtrite, SAS Forks and Lemco brands.

