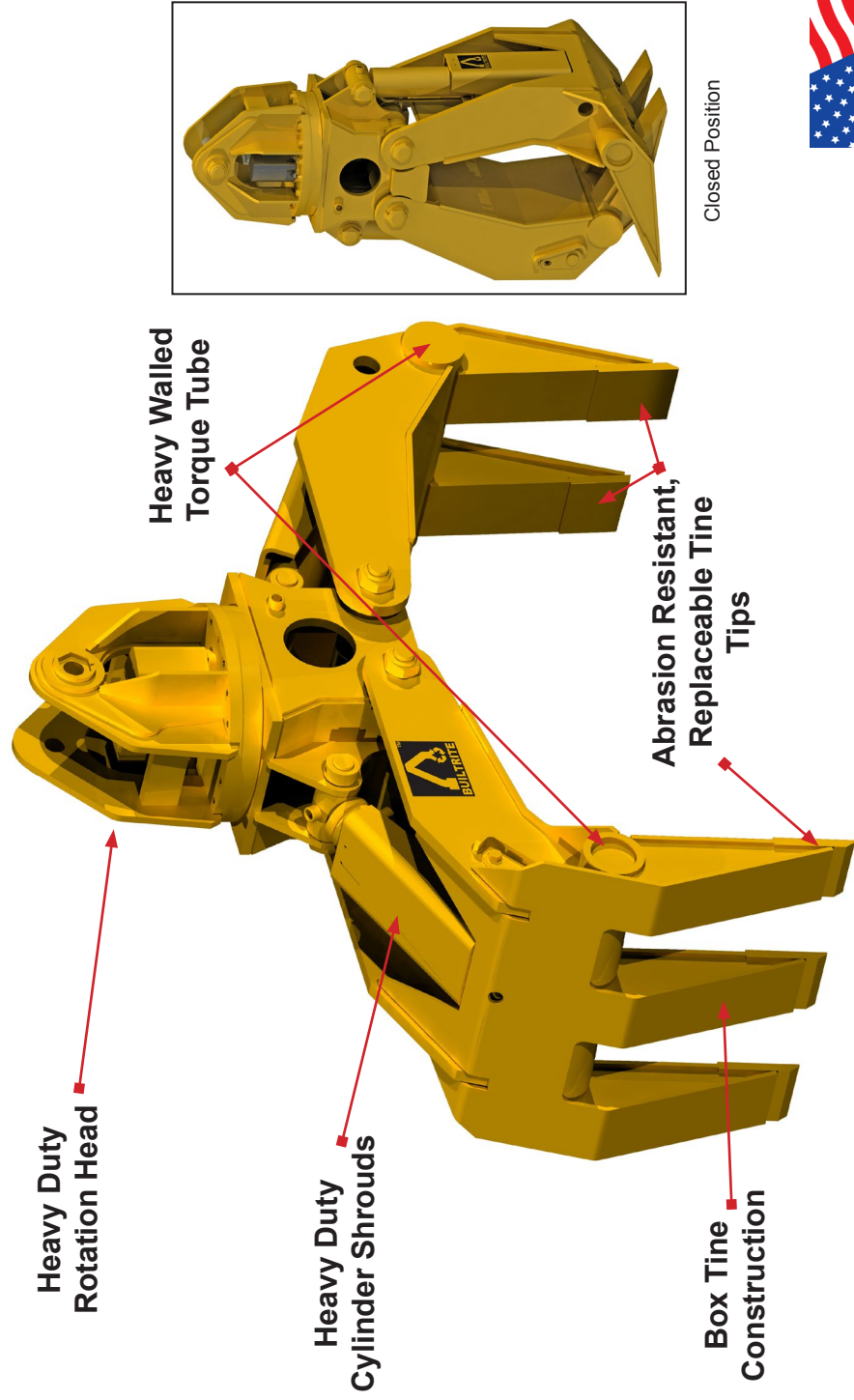


The **Builtrite, 2/3 Tine Grapple** can be configured with either a hanging style or wristing styled head, making it a very versatile tool. It can handle a wide variety of materials, including loose scrap, bales, C&D debris, brush, logs and rock. This grapple is excellent for loading and unloading stationary shears, balers and shredders. Its opposing jaw design is adept at aligning materials in the same plane, making it easier to load these machines. With the wristing action head, it can also be used for demolition work or in applications where precise picking and placement is necessary. Built with T-1 Steel in its grapple arms and using AR 500 abrasion resistant tine tips, this grapple is designed to perform in extreme conditions, providing maximum durability and low maintenance, reducing your downtime. Key features include:

- High pressure, well protected cylinders.
- Heavy duty rotation using a high torque motor and heavy duty bearing.
- Grapple arms constructed of high strength, abrasion resistant steel. Tine tips made from AR 500 plate for maximum wear resistance.
- Heavy walled torque tubes run the entire width of the grapple frames, minimizing torsional (twisting) stresses.
- Oversized, hardened cylinder and pivot pins.
- Easily accessible, yet well protected grease zerks.

If you're looking for the toughest, most durable grapple on the market, look no further...make it a **Builtrite**.

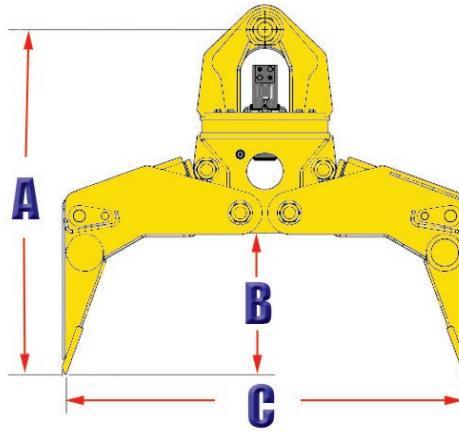


Hanging Styled Configuration  
(Single Pinning Point)

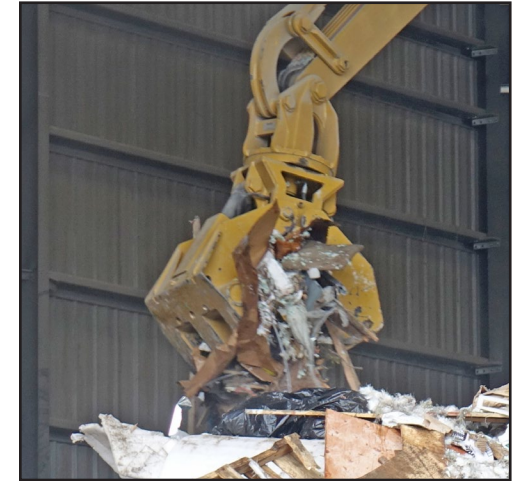


# 2/3 Tine Grapple Specifications

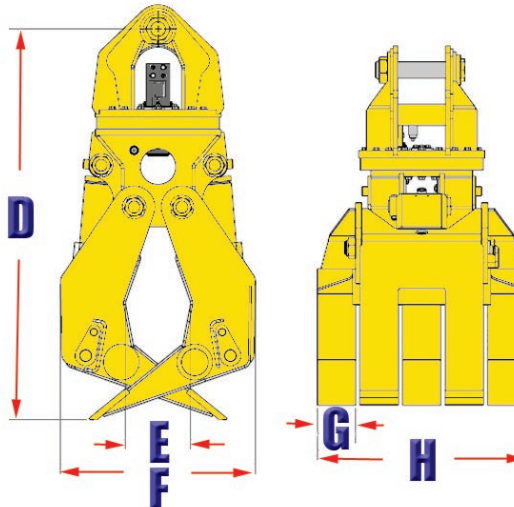
Model	Weight		(A)		(B)		(C)		(D)		(E)		(F)		(G)		(H)	
	Lbs.	Kg.	in.	mm	in.	mm	in.	mm	in.	mm	in.	mm	in.	mm	in.	mm	in.	mm
2/3 SG 20T	2,400	1,091	56	1,422	23	584	65	1,651	66	1,676	6.375	162	32.6	828	6.375	162	35	889



*Hanging Style*



*Wristing Style*



BUILTRITE MANUFACTURING RESERVES THE RIGHT TO CHANGE SPECIFICATIONS AND PRICES WITHOUT NOTICE IN ORDER TO FOLLOW ITS POLICY OF CONSTANTLY STRIVING TO MANUFACTURE A BETTER PRODUCT WITHOUT INCURRING ANY LIABILITY TO PROVIDE THESE NEW FEATURES ON ANY UNITS PREVIOUSLY MANUFACTURED.

## **Builtrite Manufacturing**

530 Recycle Center Drive, Two Harbors, Minnesota, U.S.A. 55616

Web: [www.builtrite.com](http://www.builtrite.com) E-Mail: [info@builtrite.com](mailto:info@builtrite.com) Phone: 218-834-5555 Fax: 218-834-5556