

Since 1989, **Builtrite™, Stationary Electric Material Handlers** have proven themselves in a number of waste and scrap handling applications, capable of handling a wide variety of materials. With a wide array of options, boom configurations and attachments available, let Builtrite design a material handler to maximize production at your facility. These machines operate much more efficiently, are quieter and don't emit noxious fumes, enabling them to work indoors or out. Maintenance costs are less, as electric motors require much less maintenance than their diesel counterparts and the power units can be placed remotely, removing them from dusty conditions.

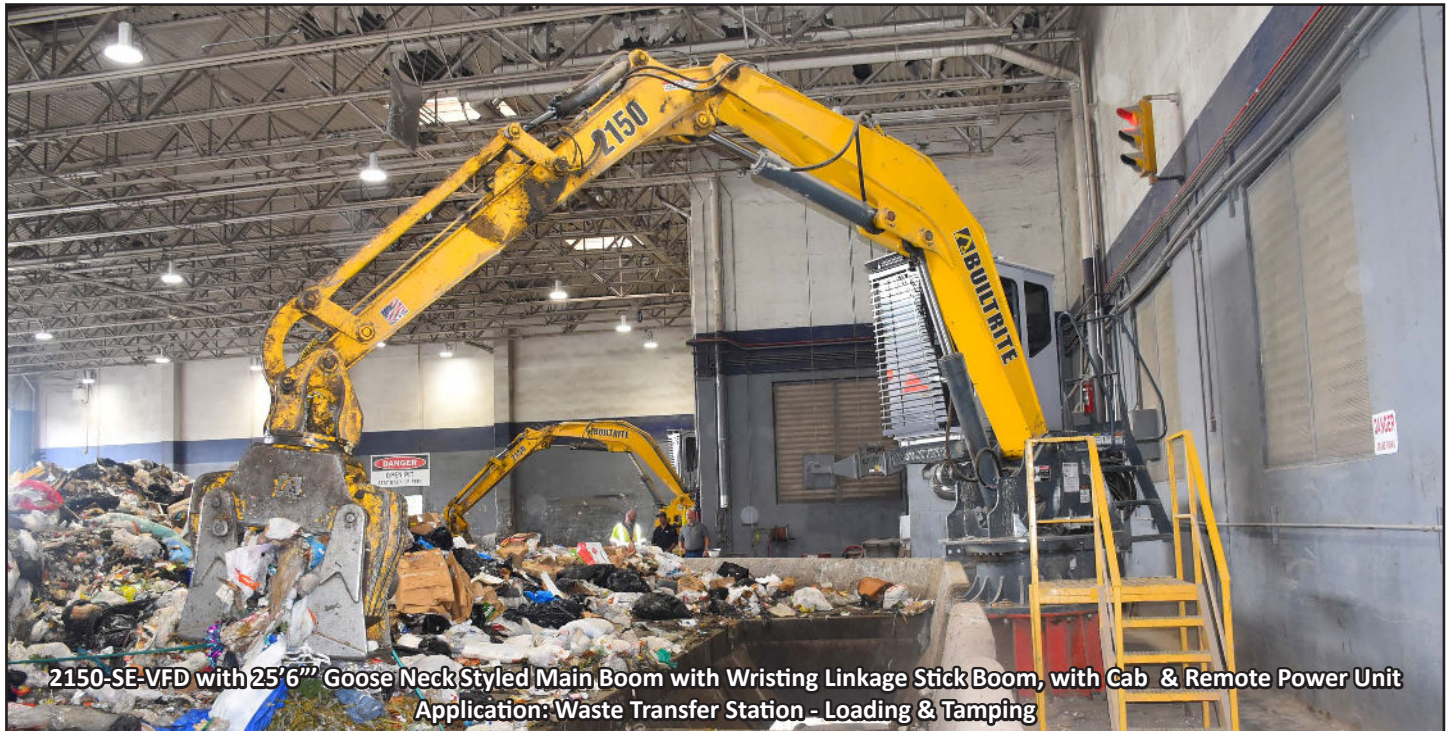
The Model 2150-SE-VFD features our patented, Variable Frequency Drive, which eliminates electrical spike loads upon ramp up. It is offered with a comfortable operator's cab with a remote power unit or can be operated completely remote. The high pressure, on-demand, load sense hydraulic system delivers power to the functions when they need them. Combined, this machine delivers extraordinary control, power and efficiency.



2150-SE-VFD with 30' Straight, Material Handler Boom, Self Contained Cab & Remote Power Unit
Application: Scrap Handling



2150-SE-VFD with 25'6" Goose Neck Styled Main Boom with Wristing Linkage Stick Boom, Remote Operator's Station & Remote Power Unit
Application: Waste Transfer Station - Loading & Tamping



2150-SE-VFD with 25'6" Goose Neck Styled Main Boom with Wristing Linkage Stick Boom, with Cab & Remote Power Unit
Application: Waste Transfer Station - Loading & Tamping

Model 2150-SE-VFD Specifications

DIMENSIONS

Dimensions will vary, depending upon configuration. Please consult factory for specific dimensions, base upon your specific, chosen options.

WARRANTY

4000 Hours or 2 Years, whichever occurs first

BOOM DATA

1] Two boom styles offered, including a 25'6" gooseneck styled boom for below grade applications and a 30', straight boom for above grade material handling applications. Custom boom lengths available, depending upon application.

2] Wristing Stick Boom incorporates a long link, to protect hydraulic tubes and cylinder in tamping applications

2] Fabricated boom design for exceptional strength

3] 3" (76mm) boom pivot and cylinder pins

4] Aluminum bronze bushings at all boom pivot points

5] Centralized Grease Standard-Auto Lube Option

HYDRAULICS & LUBRICATION

1] 110 Gallon (416L) hydraulic reservoir with return filters, complete with oil and shut-off valves

2] Stack type control valves with main relief and safety port relief for boom function

3] One (1) Single Piston Pump w/ separate gear pump for filtration

4] Piston pump, pressure compensating, on-demand hydraulic system

5] 4500 PSI (310 Bar) operating system

6] Hydraulic oil cooler. 3 HP motors drive fan and AC.

7] Hydraulic test system centrally located on machine.

BOOM CYLINDERS

1] Main boom - One (1) 6.0" (152mm) bore x 41" (1,041 mm) stroke x 4" (101mm) rod.

2] Jib boom - One (1) 6.0" (152mm) bore x 32" (813mm) x 3.5" (89 mm) rod

3] Hydraulic stop cushions on both ends

4] Wear rings on both pistons and glands

5] Rods with heavy chrome plating

6] Accumulator on main lift cylinder to cushion shock loading.

PEDESTAL BASE

1] 33.5" (851mm) high pedestal base with inspection port.

SWING SYSTEM

1] 6.5 RPM with single motor and gearbox swing drive.

2] 39" Diameter internal tooth bearing

MODULAR POWER SOURCE

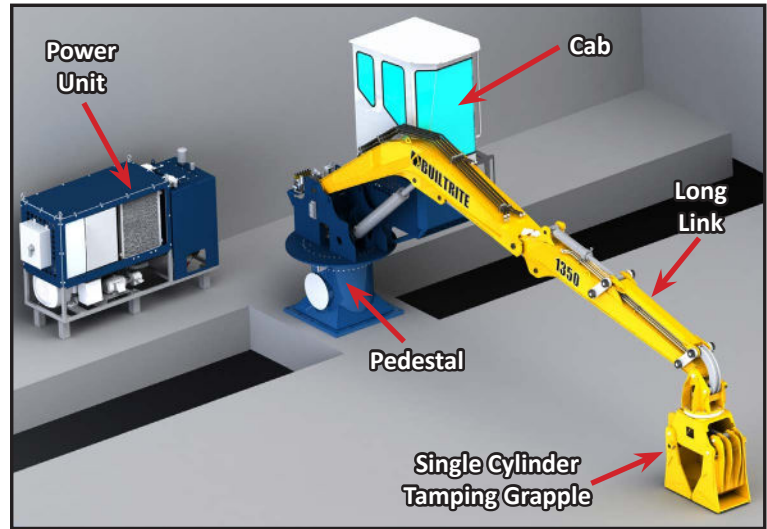
1] One (1), 100 HP, 460 Volt, TEFC electric motor

ELECTRICAL PACKAGE

1] Variable Frequency Drive

2] Breaker disconnect in N.E.M.A. enclosure

3] Electric slip ring when continuous rotation is required



OPERATOR'S CAB

1] 39" W X 52" L, fully insulated cab, equipped with sliding door, forward sloping front windshield, washer/wiper, defroster, dome light and deluxe bucket seat.

2] AM/FM, USB & Bluetooth

3] Under seat cab heater and air conditioner

4] LED Exterior Lights

5] Electronic Operator Controls - Installed in seat pods with hand swing controls

6] Parker IQAN System with MD4, 7-inch display module allows operator adjustments to be made for individual preference

7] Remote diagnostic capability

8] Cab access via ladder or stairway (if catwalk option purchased)

9] Cab can be mounted to either right or left side

LIFT CAPACITY (w/ 30' Material Handling Boom)

1] @ Ground Level, 10' Out	6,600 Lbs. / 2,993 Kg.
2] @ Ground Level, 15' Out	12,900 Lbs. / 5,851 Kg.
3] @ Ground Level, 20' Out	10,100 Lbs. / 4,581 Kg.
4] @ Ground Level, 25' Out	8,300 Lbs. / 3,764 Kg.
5] @ Ground Level, 30' Out	6,400 Lbs. / 2,902 Kg.