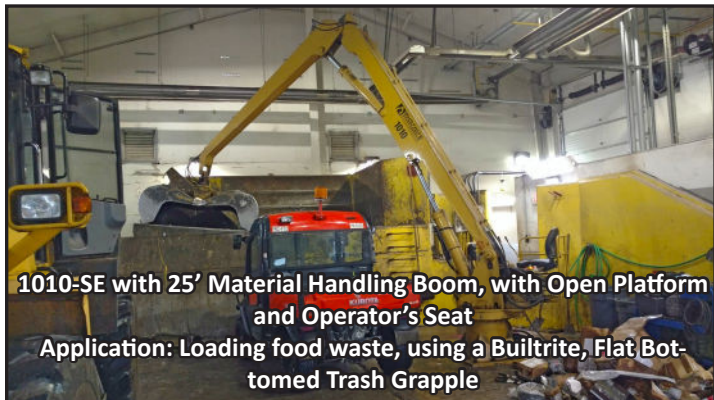


Builtrite™, Stationary Electric Material Handlers have proven themselves in a number of waste and scrap handling applications, capable of handling a wide variety of materials. With a wide array of options, boom configurations and attachments available, let Builtrite design a material handler to maximize production at your facility. Stationary Electric Material Handlers are much less expensive to operate (**Less than 50%!**), safer, quieter and don't produce emissions like diesel powered, mobile equipment. Maintenance costs are also less and the power unit can be remotely located where it is not subjected to dusty conditions, further reducing maintenance costs.



1010-SE with 25' Material Handling Boom, with Open Platform and Operator's Seat
Application: Loading food waste, using a Builtrite, Flat Bot-tomed Trash Grapple



1010-SE with 22.5' Material Handling Boom, with Self-Contained Cab & Power Unit
Application: Loading scrap wire into shredder, using a Builtrite, Model 4TSG 25 Orange Peel Grapple



1010-SE with 22.5' Material Handling Boom, with Cab & Remote Power Unit
Application: Loading scrap wire into shredder, using a Builtrite, Model 4TSG 25 Orange Peel Grapple

Model 1010-SE Specifications

DIMENSIONS

Dimensions will vary, depending upon configuration. Please consult factory for specific dimensions, base upon your specific, chosen options.

WARRANTY

4000 Hours or 2 Years, whichever occurs first

BOOM DATA

- 1] Boom Options
 - Material Handling Style
 - 22' Straight, 25' Straight, 22' with 3' Telescopic
 - Wristing Style
 - 20'6" & 26'5"
- 2] Fabricated boom design for exceptional strength
- 3] 2.5" (63mm) boom pivot, 2" (51mm) jib & main boom lift cylinder pins.
- 4] Aluminum bronze bushings at all boom pivot points

HYDRAULICS & LUBRICATION

- 1] 110 Gallon (416L) hydraulic reservoir with suction and return filters, stack type control valves with main relief and safety port relief for boom function.
- 2] One triple gear pump.
- 3] Hydraulic oil cooler. 1 HP motor drives the fan.
- 4] Shutoff valves, heavy walled tubing & multi-wire hose throughout system.
- 5] 2000 PSI (138 Bar) operating system.
- 6] Centralized Grease Standard-Auto Lube Option.

BOOM CYLINDERS

- 1] One (1) 7" x 36" x 3" rod-Main boom cylinder.
- 2] One (1) 6" x 32" x 3" rod-Jib boom cylinder.
- 3] Wear rings on both pistons and glands
- 4] Rods with heavy chrome plating
- 5] Accumulator on main lift cylinder to cushion shock loading.

PEDESTAL BASE

- 1] 33" (838mm) high pedestal base with inspection port hole.
- 2] 36" (914mm) x 36" (914mm) Square pedestal base.

SWING SYSTEM

- 1] 6.5 RPM with single motor and gearbox swing drive.
- 2] 48" (1,219mm) diameter, internal tooth bearing.

MODULAR POWER SOURCE

- 1] One (1) 50 HP 460 Volt 3 Phase, Totally Enclosed, Fan Cooled (T.E.F.C.) electric motor. The Model 1010-SE utilizes approximately 18-25 Killowatts per hour, depending upon the application.

ELECTRICAL PACKAGE

- 1] Starter, phase sequence monitor, control accessories group are all in Nema 4 enclosure.
- 2] Start/stop controls on control console.
- 3] Electric slip ring when continuous rotation is required.

OPERATOR'S CAB (if equipped)

- 1] 39" W X 52" L, fully insulated cab, equipped with sliding door, forward sloping front windshield, washer/wiper, defroster, dome light and deluxe bucket seat.
- 2] AM/FM, USB & Bluetooth
- 3] Under seat cab heater and air conditioner
- 4] LED Exterior Lights
- 5] Electronic Operator Controls - Installed in seat pods with hand swing controls
- 6] Parker IQAN System with MD4, 5-inch display module allows operator adjustments to be made for individual preference
- 7] Remote diagnostic capability
- 8] Cab access via ladder or stairway (if catwalk option purchased)
- 9] Cab can be mounted to either right or left side
- 10] One (1), 3 HP, 460 Volt Motor drives the AC compressor.

LIFT CAPACITY (w/ 25' Material Handling Boom)

1] @ 10' Out, 10' Up	10,500 Lbs. / 4,773 Kg.
2] @ 15' Out, 10' Up	7,800 Lbs. / 3,545 Kg.
3] @ 20' Out, 10' Up	6,400 Lbs. / 2,909 Kg.
4] @ 25' Out, 10' Up	4,900 Lbs. / 2,227 Kg.

