

Builtrite™, Stationary Electric Material Handlers have proven themselves in a number of waste and scrap handling applications, capable of handling a wide variety of materials. With a wide array of options, boom configurations and attachments available, let Builtrite design a material handler to maximize production at your facility. Stationary Electric Material Handlers are much less expensive to operate, safer, quieter and don't produce emissions like diesel powered, mobile equipment. Maintenance costs are also less and the power unit can be remotely located where it is not subjected to dusty conditions, further reducing maintenance costs.



Self-contained version with cab and with power unit mounted on platform. 35' (10.7M), material handling boom with orange peel grapple for loading solid waste and recyclables.



Self-contained cab and remote power unit. Boom Length = 30' (9M). Wristing styled boom with fixed demolition grapple to handle C&D Debris.

Features and Specifications:

Lift Capacity (35' (10.7M) Material Handling Boom -no attachment)

- @ 35' (10.7M) = 6,200# (2,818 Kg.)
- @ 30' (9.1 M) = 9,200# (4,182 Kg.)
- @ 25' (7.6M) = 11,700# (5,318 Kg.)
- @ 20' (6.1 M) = 16,000# (7,273 Kg.)
- @ 15' (4.6M) = 23,300# (10,591 Kg.)

Boom Data

- Horizontal Reach = 30' (9.1M) straight, wristing styled boom or 35' (10.7M) material handling boom. Other, custom boom lengths available.
- Fabricated design, high yield steel construction.
- 4" (101 mm) boom pivot, 4" (101mm) jib cylinder pin & 4" (101mm) main boom lift cylinder pins (self aligning).
- Aluminum bronze bushings at all boom pivot points.

Boom Cylinders

- Main One (1) 6.5" (165mm) bore x 41" (1,041mm) stroke x 4" (101mm) rod
- Jib Boom - One (1) 6.5" (165mm) bore, x 32" (813mm) x 4" (101mm) rod
- Hydraulic stop cushions on both ends.
- Wear rings on both pistons and glands.
- Rods with heavy chrome plating.
- Accumulators on main lift cylinders to cushion shock loading.

Rotation System

- 6.5 RPM with single motor and gearbox swing drive.
- 48" Diameter internal tooth bearing.

Controls

- Two (2) electronic joystick controls with Parker, MD4 control console & Gil module (allows for remote diagnostics).
- Hand swing control with optional foot swing control.
- Controls can be set to customer preference.

Modular Power Source

- One (1) 100 HP 460 Volt 3 Phase, Totally Enclosed, Fan Cooled (T.E.F.C.) electric motor. The Model 2300-SE utilizes approximately 40-55 Killowatts per hour, depending upon the application.
- One (1) 3 HP 44 volt motor for air conditioning Compressor drive.

Electrical Package

- Starter, phase sequence monitor, control accessories group are all in Nema 4 enclosure.
- Start/stop controls on control console.
- Electric slip ring when continuous rotation is required.

Pedestal Base

- 33" (838mm) high pedestal base with inspection port hole.
- 62" (1,575mm), OD, round base plate.
- 48" diameter, internal tooth bearing.

Hydraulic System

- 140 Gallon (542L) hydraulic reservoir with suction and return filters, stack type control valves with main relief and safety port relief for boom function.
- Pressure load compensating, on demand hydraulic system.



Operator's Cab

- 39" (990mm) x 62" (1,575mm), fully insulated, equipped with a sliding door & sliding window.
- Front window wiper & washer, defroster fan & dome light.
- Deluxe bucket seat.
- Cab heater, air conditioner and filtering pressurizer.
- Two (2) LED cab mounted work lights.
- Radio, CD & MP3 player.

Miscellaneous

- Hydraulic Tank Filled.
- Unit greased and tested prior to shipment.
- Manual, centralized grease system.

Options / Accessories

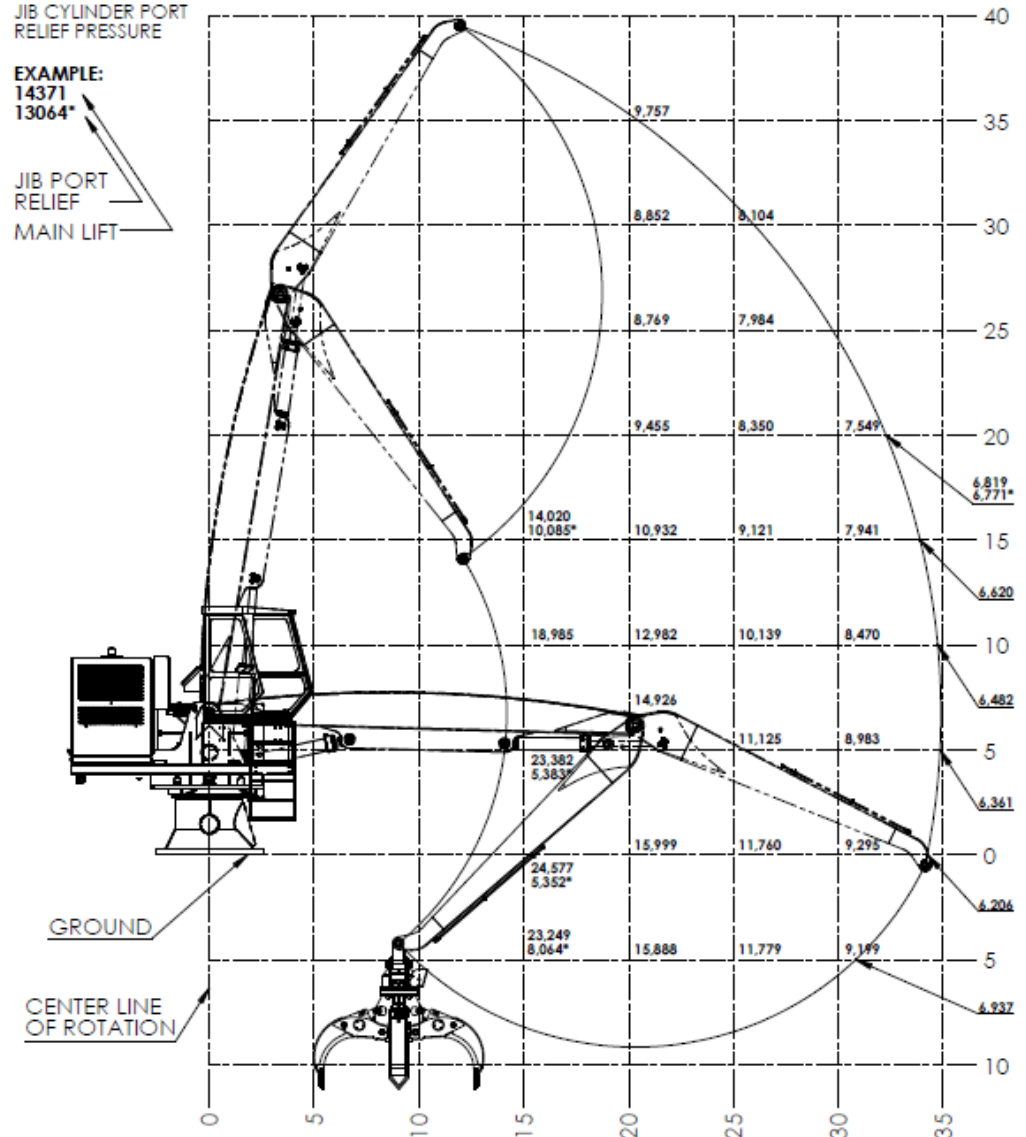
- Remote operator controls and remote power unit options.
- Air conditioning / 120 volt, electric heater.
- Autolube grease system.
- Rectifier package for magnet.
- Continuous rotation option with auxiliary pass electrical collector.
- Custom boom lengths.

* LOWER NUMBER INDICATES LIFT CAPACITY LIMITED BY JIB CYLINDER PORT RELIEF PRESSURE

Material Handler Configuration

EXAMPLE:
14371
13064*

JIB PORT RELIEF
MAIN LIFT



BUILTRITE MANUFACTURING RESERVES THE RIGHT TO CHANGE SPECIFICATIONS AND PRICES WITHOUT NOTICE IN ORDER TO FOLLOW ITS POLICY OF CONSTANTLY STRIVING TO MANUFACTURE A BETTER PRODUCT WITHOUT INCURRING ANY LIABILITY TO PROVIDE THESE NEW FEATURES ON ANY UNITS PREVIOUSLY MANUFACTURED.

Builtrite Manufacturing

530 Recycle Center Drive, Two Harbors, Minnesota, U.S.A. 55616

Web: www.builtritehandlers.com E-Mail: info@builtritehandlers.com Phone: 218-834-5555 Fax: 218-834-5556