



Truck Mounted Material Handlers

Model 1300-TM

Builtrite™, Heavy Duty, Truck Mounted Material Handlers (Back of Cab and Tail Mounts) have proven themselves in a number of applications to be the tool of choice for handling a wide variety of materials. From mining, scrap handling, utility, railroad and general construction, we can custom design a crane for all of your material handling needs. The 1300-TM is the all-around utility tool on and off the job site. Found in a wide variety of applications. It is capable of handling over 19,000 Lbs. (8,636 Kg.) at 10' (3M). High lift capacity, excellent operator visibility and comfort make the 1300-TM an easy choice.



Features and Specifications:

Lift Capacity (Less attachment)

- 19,185 Lbs. (8,720 Kg.) @ 10' (3M) R
- 12,908 Lbs. (5,867 Kg.) @ 15' (4.57 M) R
- 9,493 Lbs. (4,315 Kg.) @ 20' (6M) R
- 7,162 Lbs. (3,255 Kg.) @ 25' (7.6M) R

Boom Data

- Horizontal Reach = 23'4" (7.1M)
- Vertical Reach = 34'8" (10.6M)
- Main Boom Length = 14'2" (4.3M)
- Jib Boom Length = 9'2" (2.8M)
- High yield, fabricated steel construction.
- 3" (76mm) boom pivot and 2.5" (64mm) cylinder pins with magnesium bronze bushings at all pivot points.

Boom Cylinders

- One 7" (178mm) bore x 41" (1,041mm) stroke x 3.5" (89mm) rod main boom cylinder.
- One 7" (178mm) bore x 30" (762mm) stroke x 3" (76mm) rod jib boom cylinder.
- Double acting, heavy walled, honed cylinder tube.
- Wear rings on both pistons and glands.
- Rods with heavy chrome plating.



Swing System

- 360° continuous rotation with a 39" (990mm) diameter turntable bearing, powered by two swing motors and planetary gear boxes.
- Swing brake on each motor.

Platform

- Rotating operator's platform with fold-down, adjustable seat and 2-lever, mechanical joysticks.
- Foot controlled swing.
- Safety guard rail around operator.

Main Frame

- High tensile, heavy wall rolled steel tube.
- Overall height 13'5" (4.1M) mounted on 44" (1.1M) high truck frame.

Stabilizers

- 14' (4.2M), fold-away with two (2) 6" (152mm) diameter x 17" (432mm) stroke x 3" (76mm) rod cylinders.
- Control valves are mounted on rotating platform for easy operator access.
- Heavy duty ladder on platform side.

Specifications (cont.) & Range Diagram

Miscellaneous

- Requires 44" (1,117mm) of mounting space.
 - Mounting bolts and support plates included.
 - Approximate weight with standard equipment (less attachment and oil) is 9,850 Lbs. (4,477 Kg.).
- ## Options/Accessories
- Servo joystick control package.
 - Boom lengths up to 25'4" (7.8M).
 - Horizontal out / vertical down stabilizers.
 - Hand swing control in lieu of foot swing.
 - Various grapples and other attachments available.
 - Trailer mount frame package.
 - Custom colors to match customer preference.



Available Attachments

We offer a wide variety of attachments including:

- ### Hydraulic Reservoir
- 55 Gallons (208 Liters) loader mounted, with suction and return line filters.
 - Air to oil cooler, mounted on tank with a 12-volt fan.

Power Source

- Power take-off from truck engine.

Pump

- Triple Commercial providing 30/30/15 GPM (114/114/57 LPM) @ 1400 RPM.
- 2500 PSI (172 Bar) operating system.

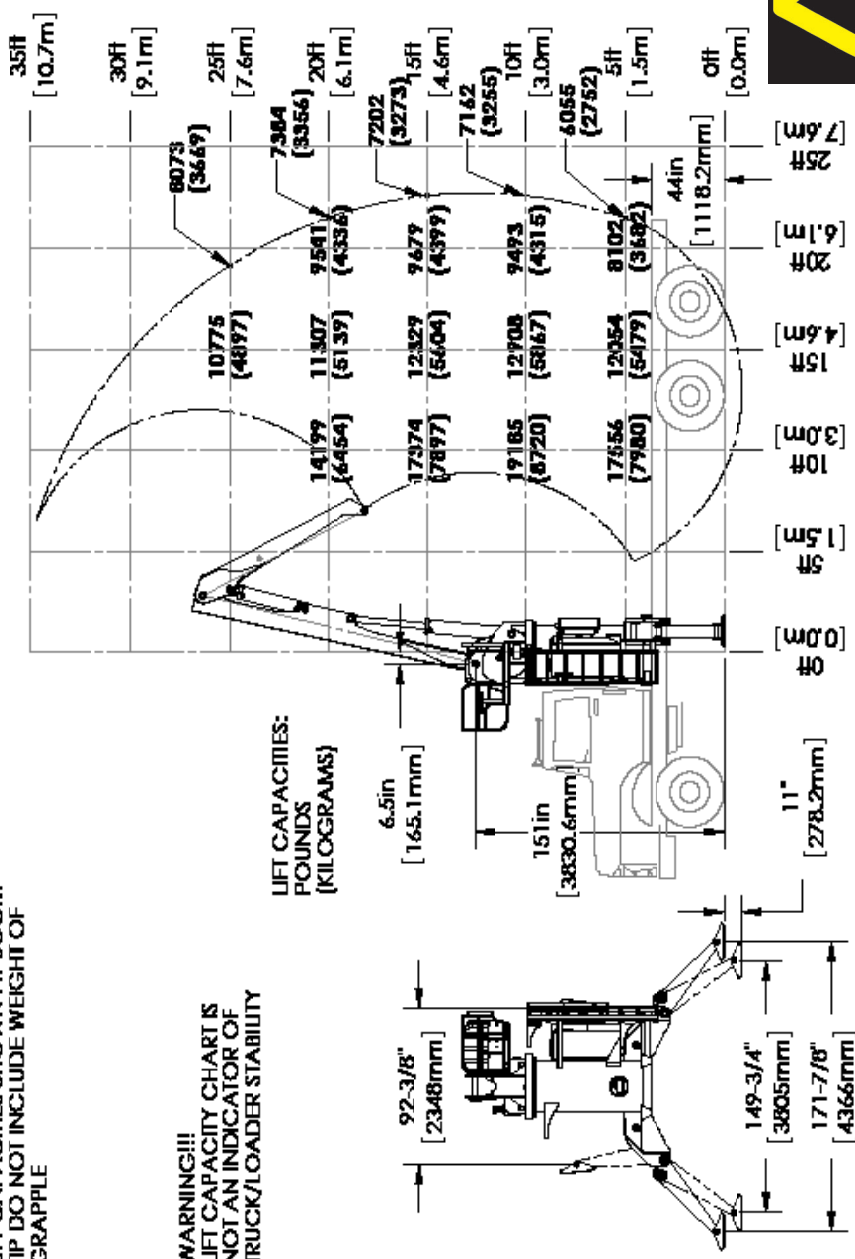
Control Valves

- Stack type with mechanical joystick controls.

2500 PSI SYSTEM PRESSURE
3000 PSI PORT RELIEF PRESSURE
LIFT CAPACITIES SHOWN AT BOOM TIP DO NOT INCLUDE WEIGHT OF GRAPPLE

WARNING!!!
LIFT CAPACITY CHART IS NOT AN INDICATOR OF TRUCK/LOADER STABILITY

**NORTHSIDE MANUFACTURING
1300 RANGE/LIFT DIAGRAM**



BUILTRITE MANUFACTURING RESERVES THE RIGHT TO CHANGE SPECIFICATIONS AND PRICES WITHOUT NOTICE IN ORDER TO FOLLOW ITS POLICY OF CONSTANTLY STRIVING TO MANUFACTURE A BETTER PRODUCT WITHOUT INCURRING ANY LIABILITY TO PROVIDE THESE NEW FEATURES ON ANY UNITS PREVIOUSLY MANUFACTURED.

Builtrite Manufacturing

530 Recycle Center Drive, Two Harbors, Minnesota, U.S.A. 55616

Web: www.builtritehandlers.com E-Mail: info@builtritehandlers.com Phone: 218-834-5555 Fax: 218-834-5556